

AUSTRALIAN

APERITIVO HOUR: WINNING WINES AND CANAPÉS

HOUSE & GARDEN

Australia's
TOP 50
ROOMS

Water wise
GARDENS

GORGEOUS
homes to love!

EATING OUT *our top picnic pieces*



17 Bathing beauty

Justine Hugh-Jones and Katrina Mackintosh, Hugh-Jones Mackintosh

While the spectacular view from the ensuite in this Lower North Shore Sydney home is a standout, it's the perfectly positioned curvaceous bath that instantly catches the eye. Project leads Justine Hugh-Jones and Katrina Mackintosh developed a calming palette of subtle tones and textures, which work together to create a serene retreat for the owners of this new light-filled bathroom.

Hugh-Jones Mackintosh, Mosman, NSW; (02) 9212 3343 or hughjonesmackintosh.com.

ROOM NOTES (17) Vanity custom designed by Hugh-Jones Mackintosh. DR bath, Agape. 'Yokato' wall-mixer set in Roma Bronze, Brodware. Carlo Nason pair of iridescent Murano glass sconces, 1stDibs. **ROOM NOTES (18)** Vanity top in Calacatta Viola, Artdomus. Perrin & Rowe 'Contemporary' tapware, The English Tapware Company. Domi wall sconce, Articolo. Custom solid timber-surround mirrors by Arent&Pyke. Santa Margherita Terrazzo floor tile, Classic Tiles.



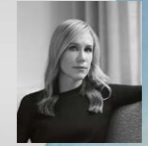
18 Soft touch

Juliette Arent and Sarah-Jane Pyke, Arent&Pyke

Pale nougat-pink walls and soft-peach terrazzo floors set the delicious tone in this spacious ensuite in Sydney's east. Beautiful Calacatta Viola marble tops the generous double vanity with a curved burl base hiding plentiful storage. A deep white bath sits atop the Santa Margherita terrazzo tiled floor. "Glass doors leading to the ensuite from our walk-in wardrobe enable light to pour inside," says the owner, "but more importantly, provide views of our stunning bath."

Arent&Pyke, Surry Hills, NSW; (02) 9331 2802 or arentpyke.com.

Photography by Prue Ruscoe (17), Anson Smart (18 and 19). Styling by Olga Lewis (17), Claire Delmar (18), Atelier Lab (19).



19 Blue Crush

Madeleine Blanchfield, Madeleine Blanchfield Architects

This light and lovely bathroom in Sydney's Eastern Suburbs was designed to help reflect the client's time living in Hong Kong and draw upon its location close to the beach. Wallpaper reminiscent of the city's mountains features on the walls "while changing blue tones pick up on the client's brief to imbue the house with shades of blue, drawing upon the colours of the ocean..." says Madeleine Blanchfield who was charged with designing the bathroom in this new build (along with project architect Nick Channon).

Madeleine Blanchfield Architects, Paddington, NSW; (02) 9212 3343 or madeleineblanchfield.com.

ROOM NOTES Yunnan by Pierre Frey wallpaper, Milgate. Gareth Ashton Formosa natural stone bath, Total Home Design. Vase, *Untitled*, Lia Klugman Ceramics. *Yield, It's a Blue Kent*, 2019 sculpture by Ben Tooth, Nasha Gallery.



Best bedroom
WINNER

SPONSORED BY



**BIRD
IN
HAND**

Top 50 Rooms | **BEDROOMS**



30 Colour theory
*Justine Hugh-Jones and
Katrina Mackintosh,*

Hugh-Jones Mackintosh

By intertwining Georgian features with vintage pieces and a refreshing new palette, Justine Hugh-Jones and Katrina Mackintosh revived this bedroom to create a stunning retreat. The vibrant yet calming shades sprinkled throughout provide respite from the bustling urban environment outside. The 'Poliedri' chandelier by Carlo Scarpa is a contemporary homage to the historic detailing throughout. A curated collection of vintage furniture and artwork delineates the space, writing the next chapter of the home's rich story.

**Hugh-Jones Mackintosh, Mosman, NSW;
0414 257 514 or hughjonesmackintosh.com.**

ROOM NOTES (30) 'Poliedri' chandelier by Carlo Scarpa, 1stDibs. 'Karaoke' hand-knotted rug by Reuber Henning, Halcyon Lake. Artwork by Marisa Purcell.

Photography by Prue Ruscoe. Styling by Olga Lewis.



34 Concrete idea
*Michael Leeton,
 Leeton Pointon Architects
 and Karyne Murphy Studio*

Organic forms and a natural palette were key in redefining this dark 1940s post-war house as an open space that welcomes natural light. Designed by Leeton Pointon Architects, with interiors by Karyne Murphy Studio, the family home allows raw materials to shine within the zoned interiors, through to the garden room open to the outdoors. “The room elevates rudimentary concrete construction to a textured and highly expressive form,” says director Michael Leeton.

Leeton Pointon Architects, St Kilda, Vic;
(03) 8598 9300 or leetonpointon.com.



35 Gorgeous
 Georgian
*Justine Hugh-Jones and
 Katrina Mackintosh, Hugh-Jones Mackintosh*

The owners of the dreamy pale pink Georgian home in Sydney’s east – a well-known landmark in its area – chose the team at Hugh-Jones Mackintosh to refresh their lovely heritage home for the contemporary needs of a growing family. The mission was to create additional space and provide an easier transition between interior and exterior spaces. Carving out a new underground area gained an additional lounge and breakout room. Nostalgic features, such as the sunroom terracotta tiles, have been restored.

Hugh-Jones Mackintosh, Mosman, NSW;
0414 257 514 or hughjonesmackintosh.com.



36 Room to grow
*Shaun Carter,
 Carter Williamson*

This renovation of an existing warehouse speaks to the notion that bigger is not always better. Relinquishing a third of the interior space, a large verdant courtyard was built in the centre of the home, acting as a private lush oasis. “As the design process unfolded, the structure revealed many unsuspecting qualities and developed into a set of interiors with a unique character, resplendent in luxurious materials, sculptural forms, and rich, earthy tones,” says principal Shaun Carter.

Carter Williamson, Summer Hill, NSW;
(02) 9799 4472 or carterwilliamson.com.

Photography by Lisa Cohen (34), Prue Ruscoe (35), Pablo Veiga (36). Styling by Olga Lewis (35), Carter Williamson and Jordan (36).

ROOM NOTES (34) Myron dining table, In Good Company. Cab chairs, Mobilia. Outdoor table, Globewest. Vintage chairs, Ici Et La.
ROOM NOTES (35) Cassina slated teak dining table with terrazzo plinths in green and white, Mobilia. ‘Cielo’ dining chairs, Origins. Timber raised platter, Watertiger. **ROOM NOTES (36)** ‘Virus’ picnic table, Living Edge. Kentia Palm tree.

Best soft furnishings
WINNER

SPONSORED BY



Top 50 Rooms | SOFT FURNISHINGS



38 Grand gesture *Kate Nixon*

Kate Nixon and her team were tasked with refreshing and updating furniture and soft furnishings in the formal lounge room of a grand home in Sydney's east to complement the existing architecture and the family's collected treasures. The room is centred on the bespoke, over-scaled leather ottoman that links the custom Flexform Gregory sofas with the classic vintage rug. Elegant sheers filter lush garden and iconic harbour views to complete a timeless ambience that exudes comfort and sophistication.

Kate Nixon, Rushcutters Bay, NSW;
0455 100 062 or katenixon.com.

ROOM NOTES (38) Flexform 'Gregory' sofas and chaise, Fanuli. Bespoke leather ottoman and custom cushions, Studio Kate. 'Mantova' linen curtains, Ascraft. Lanerossi natural check throw, Kate Nixon Store.

ROOM NOTES (39) 'Julep' sofa, Stylecraft. 'Pacha' lounge chairs, Criteria. Giopato & Coombes 'Gem Cluster 06' pendant light, District. Abaca/Manzanilla handwoven rug, International Floorcoverings Australia. Vintage rattan mirror, Conley & Co. Vintage travertine coffee table, 1st Dibs.



39 Melting moment *Justine Hugh-Jones and Katrina Mackintosh,* *Hugh-Jones Mackintosh*

Artfully weaving collected pieces with the newly acquired, such as the vintage rattan mirror from Conley & Co that traces the lines of the curvaceous 'Julep' sofa from Stylecraft, designers Justine Hugh-Jones and Katrina Mackintosh reprised the interiors of the living room in a heritage home in Sydney's Eastern Suburbs. "We curated vintage furniture, avoiding waste and allowing already storied pieces to then be added to," says Justine.

Hugh-Jones Mackintosh, Mosman, NSW;
0414 257 514 or hughjonesmackintosh.com



40 Personal growth *Lucinda Kimpton,* *Kimpton Interiors*

To reconfigure and integrate a self-contained area that accommodates visitors and extended family into the style of the owner's original 23-room historic homestead, Lucinda chose a wallpaper that matched the aesthetic and set the tones for the generous space. The luxurious seating area serves as a restorative retreat, defined by custom curtains, re-upholstered wingback chair and a large rug, the perfect spot for leisurely reading or a relaxing afternoon tea.

Kimpton Interiors, Penshurst, Vic;
0402 464 817 or kimptoninteriors.com.au.

Text by Janice Hogg (38-41). Photography by Maree Homer (38), Prue Ruscoe (39), Lisa Cohen (40), Pablo Veiga (41). Styling by Kate Nixon (38), Olga Lewis (39), Ruth Welsby (40), Carter Williamson with Jardan (41).

ROOM NOTES (40) Lake August 'Nasturtium' wallpaper in Bigleaf from Elliott Clarke. Artwork above fireplace by Alexander McKenzie; above chest of drawers, client's own collection. Client's wingback armchair re-upholstered in Chelsea Textiles 'Rust' and trimmed in Janet Yonaty cord and ribbon, Tigger Hall Design. Custom curtains in Raffles 'Venezia' in Oyster from Redelman Fabrics. **ROOM NOTES (41)** 'Joy' swivel armchairs, 'Valley' sofa and 'Molly' coffee table, Jardan. Curtains in 'Vienna' fabric in Antique, James Dunlop Textiles. MakeBelieve 'Drop' floor lamp, CCSS. High Atlas 'Taznakht 3' rug, Halcyon Lake.



41 Nature lover *Shaun Carter,* *Carter Williamson*

Counter to the idea that bigger is better, this existing warehouse conversion shaved away internal space to create a central landscaped courtyard, with new windows and doors "bringing sunshine, air and greenery deep inside". Working with Jardan, Shaun dressed the interiors in luxe materials and sculpted forms. Rich earth-toned curtains in the living room echo the red steel window frames and curvy furniture in leafy green fabric reaches out to embrace the newly expanded garden.

Carter Williamson, Summer Hill, NSW; (02) 9799 4472 or carterwilliamson.com.



Best use of colour
WINNER

SPONSORED BY



42 Jewelled cameo

Juliette Arent and Sarah-Jane Pyke, Arent&Pyke

The designers looked to balance bold character and moments of serenity through considered staging of colour in their transformation of a worker's cottage into a two-storey home in Sydney's Eastern Suburbs. A brief of "more colour and more interesting" saw them strive to make tonal selections appeal on emotional levels. Layers of depth and vibrancy include a soothing tone for the living room walls painted in Dulux White Beach that "envelops with a unifying warmth and balances the jewel-toned furnishings".

Arent&Pyke, Surry Hills, NSW;
0432 495 421 or arentpyke.com.



43 Sunny best

Brooke Aitken, Brooke Aitken Design

Yellow rules in this powder room where vibrant shades are at play, adding a unique identity to the intimate space and setting the painted walls and tiled splashback aglow in the sunny tone. Sleek black Brodware tapware and the handmade 'Felix' vanity in steel and stone contrast with the traditional Oriental-style 'Adriana' basin patterned in emerald, regal blue on the outer surface with cool white, gold flecks and red spheres within.

Brooke Aitken Design, Ultimo, NSW; 0415 885 891 or brookeaitkendesign.com.au.



44 Freshly minted

Lucinda Kimpton, Kimpton Interiors

Exquisitely tailored Colefax and Fowler curtains in soothing Eau de Nil frame serene garden views from the dining room and a feature wall frescoed with a lush landscape deliver a "calming feeling of being encapsulated within nature", the designer says. "A stunning Vaughan 'Leaf' chandelier with tonal fabric shades is another highlight and matching wall lighting adds to the sophistication. Re-upholstered chairs make the finishing touch for an inviting space."

Kimpton Interiors, Penshurst, Vic; 0402 464 817 or kimptoninteriors.com.au.



45 Mossy tale

Justine Hugh-Jones and Katrina Mackintosh, Hugh-Jones Mackintosh

Taking cues from a candy-coloured artwork by Michael Muir, Hugh-Jones Mackintosh washed this sunroom in a rich green custom paint shade, connecting to the colours seen in the sprawling garden beckoning through arched doors of the 1920s character-rich heritage residence in Sydney's east. Accented with vibrant furnishings, the room's muted yet warm base palette conjures a feeling of retreat and removal from the bustle of the city, say the designers.

Hugh-Jones Mackintosh, Mosman, NSW;
0414 257 514 or hughjonesmackintosh.com.

ROOM NOTES (45) Walls in custom green colour. Artwork by Michael Muir. Smaller artwork by Ildiko Kovacs. Gaetano Pesce large vase. Yellow ceramic drum table, Becker Minty. Erich Ginder pendant light. 1950s French bamboo armchairs, Tigmi Trading.

ROOM NOTES (42) Existing sofa reupholstered in Pierre Frey 'Arsene' fabric and Maison de Vacances cushions. Custom curved sofa upholstered in Pierre Frey 'Bridget' bouclé. DePadova 'Silvia' rattan armchairs, Boffi. Christophe Delcourt 'IBO' low coffee table, Ondene. Alan Cumming artwork. Walls in Dulux White Beach. Marra collection rug, Loom. Cassina 'LC8' stools and Cassina '194 9' side table, Mobilia. Lumina 'Daphne Terra' floor lamp, ECC.

ROOM NOTES (43) Splashback tiles in Daffodil, Surface Studio. Walls in Resene Ipanema Yellow. 'Adriana' basin in 'Felix' console, London Basin Company. Brodware 'City Plus' wall set in Nero. Kristina Dam Studio rotating mirror, Designstuff. Floor tiles in Patchwork Navy, Surface Gallery. **ROOM NOTES (44)** Iksel 'Italian Panoramic' fresco wallpaper, Boyac. Ceiling in Dulux Natural White. Vaughan 'Colombier Leaf' chandelier and 'Carrick Leaf' wall light with custom shades in Colefax and Fowler 'Lucerne' in Eau De Nil, Domus Textiles. Custom curtains in Colefax and Fowler 'Dart Stripe' in Leaf Green and contrast 'Lucerne' silk in Eau de Nil, Domus Textiles. Antique dining table and chairs, Allpress. Chairs reupholstered in Blithfield 'Osborne' fabric in Green, Tigger Hall Design.

Text by Janice Hogg (42-45). Photography by Anson Smart (42), Prue Ruscoe (43 and 45), Lisa Cohen (44). Styling by Claire Delmar (42), Ruth Welsby (44), Olga Lewis (45).