

AMAZING CREATIVE WOMEN:
Sophie Holt & Chloe Brookman

belle

100+
PAGES OF
BEAUTIFUL
INTERIORS
FROM
AUSTRALIA'S
BEST

HOME
FOR THE
HOLIDAYS

THE WINNERS OF THE
INTERIOR DESIGN AWARDS

THE BIG REVEAL

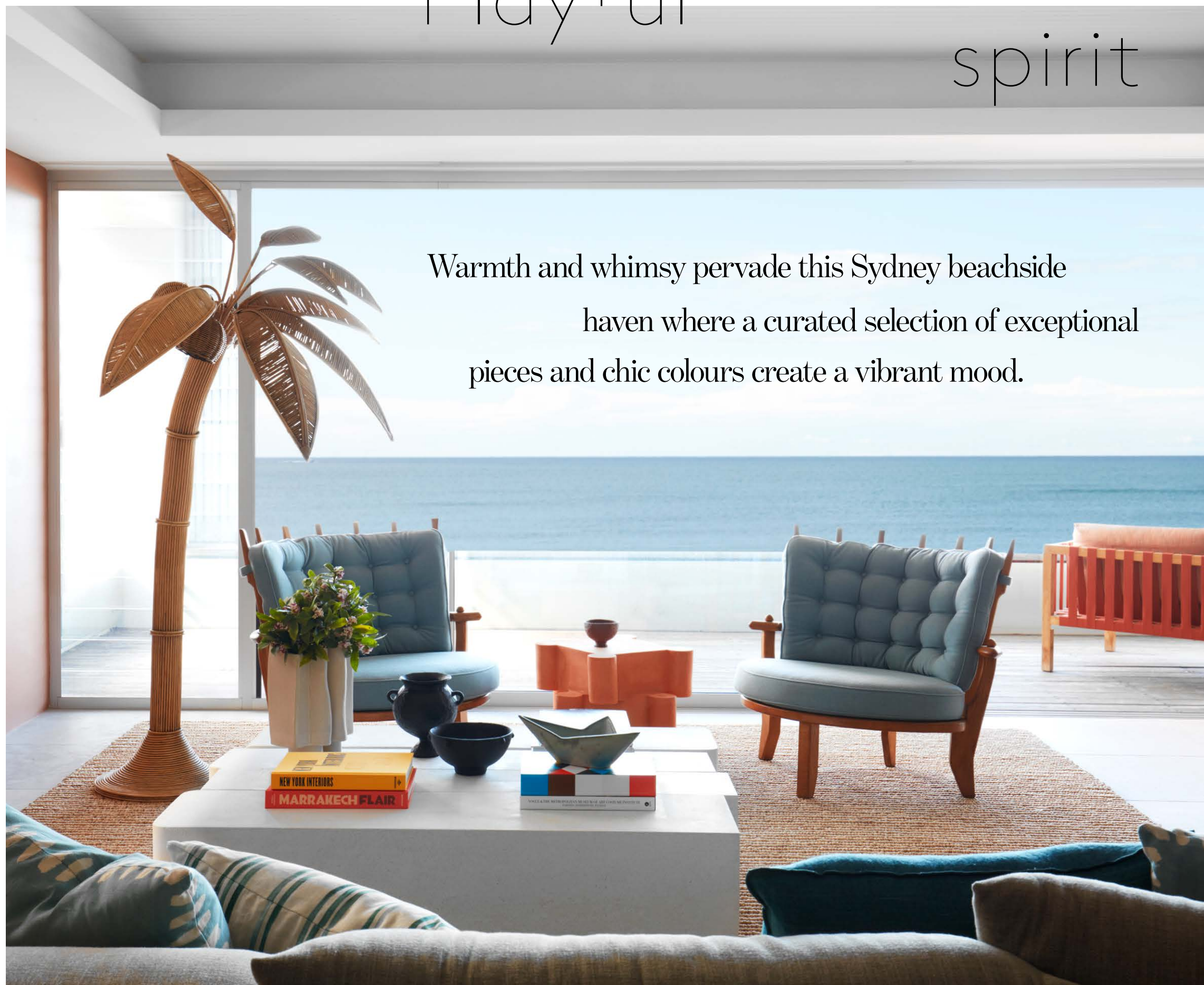
Words **JUDY PASCOE** Photography **PRUE RUSCOE** Styling **OLGA LEWIS**



These pages, from left A Gaetano Pesce for B&B Italia 'Up' chair and ottoman in red-and-white stripes from Space creates a St Tropez-style vibe in the study. Vintage Tuareg rug from Kulchi. Side table from Becker Minty. USM Haller cabinet from Anibou holds a vintage ceramic from Mercer & Lewis and a lidded ceramic bowl from Planet. My Space 2020-4 artwork by Zhu Peihong from Harvey Galleries. The expansive living area enjoys spectacular ocean vistas. A pair of vintage Guillerme et Chambron chairs from 1stdibs beside a vintage rattan palm-tree lamp from Tamsin Johnson. BZippy & Co side table from Jordan. 'Kit Kat' limestone coffee table from denHolm. Stoneware amphora and 'Spike' ceramic bowl, both by Katarina Wells, and vintage ikebana ceramic from Rudi Rocket. Roda 'Mistral' outdoor chair from Pure Interiors.

Playful spirit

Warmth and whimsy pervade this Sydney beachside haven where a curated selection of exceptional pieces and chic colours create a vibrant mood.



When the opportunity presents to have some fun with interior design, Justine Hugh-Jones and Katrina Mackintosh, principals of boutique studio Hugh-Jones Mackintosh (HJM), eagerly take up the challenge. The duo are known for their whimsical and unconventional approach, layering vintage and bespoke pieces and injecting shots of colour into their schemes.

This Palm Beach house is the holiday home of repeat clients, a couple with two daughters, who knew to trust HJM with the brief of a youthful approach to the design. On an enviable site across from the beach, the property is blessed with mesmerising ocean views, plenty of light and sun and abundant space for entertaining. “It’s a very peaceful and relaxed location,” says the owner, “where you feel even more removed from the city than you actually are.”

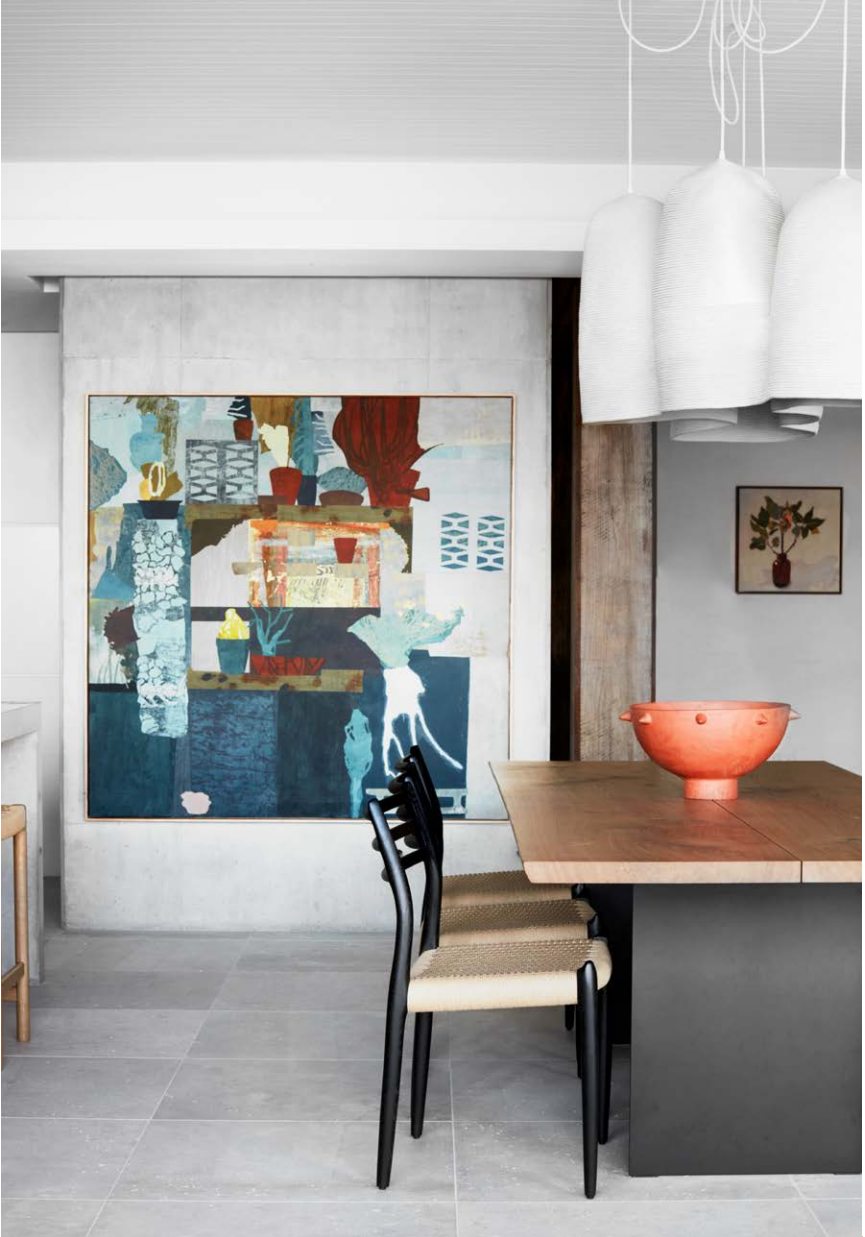
The existing three-storey house was contemporary but bland and the owners wanted it ‘warmed up’ – but they requested

practicality as well as beauty. “There is a lot of concrete and glass,” Katrina says. “We wanted to make the house feel warm and inviting but with a sophisticated vibe rather than coastal.”

To balance the structure’s hard edge and the linearity of the open-plan living spaces, the designers opted for a soft focus with vintage pieces and organic shapes in natural materials including rattan, rope, limestone and wicker.

Hints of the whimsicality that lies within start at the entry foyer, which is a study in contrasts with its recycled timber pillars marking out the space that hosts an artful pairing of furniture pieces – a jaunty black and white-striped ‘Slon’ table by Matter Made and a graceful rattan wingback chair by Fratelli Boffi – with a dramatic landscape by artist Dan Kyle.

This eclectic selection of design pieces as well as the juxtaposition of old with new, textured with smooth and bold with restrained give the home an insouciant sensibility and enhance its refined »



This page, clockwise from top left An artwork by Nicola Moss from Arthouse Gallery presides over the dining setting, ‘Tree’ table and Moller ‘#78’ chairs, all from Great Dane. Pendant lights by New York artisan Doug Johnston. Large ceramic bowl by Katarina Wells. Limestone floor tiles from Onsite. The kitchen is pared back and practical with concrete benchtops. Blue sculpture by The Visuals. ‘Riviera’ console by Maison Sarah Lavoine from Bastille and Sons with urn from Tigmi Trading and lamp by Sarah Nedovic Gaunt. ‘Kit Kat’ limestone coffee table from denHolm holds vintage ikebana ceramic from Rudi Rocket. Wall painted in Dulux ‘New Penny’. **Opposite page** View to thrill from the dining area furnished with a ‘Tree’ table and Moller ‘#78’ chairs, all from Great Dane. Pendant light by Doug Johnston. Cane side table by India Mahdavi.





“THE DESIGNERS SELECTED A PALETTE OF SUN-KISSED TERRACOTTA AND EARTHY KHAKI WITH JUDICIOUS ACCENTS OF SOFT BLUES AND GREENS TO ECHO THE SEA AND THE GARDEN ...”

« yet relaxed vibe. The rattan and wicker materiality speaks to the home’s location though it lends unpretentious charm in any setting.

Not wishing to do typical beach-house colours, the designers selected a palette of sun-kissed terracotta and earthy khaki with judicious accents of soft blues and greens to echo the sea and the garden, which is an integral part of the property and now boasts a lush new planting scheme.

Walls painted in Dulux ‘New Penny’, ‘Bread Crumb’ and ‘Lamb’s Ears’ provide a welcoming backdrop for natural tones and textures in the stone flooring, vintage Moroccan rugs, accessories and lamps. The occasional shots of high-octane brights are vibrant punctuation points, seen in the neon-blue artwork in a bedroom, a window seat in Pierre Frey ‘Ingo Modern’ geometric fabric, and the turquoise lacquered drawers on a Maison Sarah Lavoine timber and rattan cabinet in the main bedroom.

Playful accessories, including a vintage rattan palm-tree lamp from Tamsin Johnson and a custom coiled rope pendant light by New York artisan Doug Johnston lend a curated feel, while bold pieces such as Gaetano Pesce’s ‘Up’ chair and ottoman in perky red and white stripes further enliven the scheme.

In the spacious living room the upholstery on a pair of vintage Guillerme et Chambron chairs echoes the blue of the sea over their shoulder, their refined form tempered by the fanciful rattan palm tree alongside. The asymmetrical limestone coffee table by denHolm generates a suggestion of surprise which is entirely in keeping with the home’s aesthetic.

As well as a slew of bedrooms and bathrooms, the home is complemented by a separate yoga studio and spa which has been extended with a new deck and furnished with a circular daybed, a jacuzzi, bar, barbecue and small kitchen so it can double as an entertaining area. “The views from up there are incredible,” »



This page The casual sitting area has a Living Divani ‘Neowall’ sofa from Space. Side table by India Mahdavi. Vintage Beni Ourain rug from Tigmi Trading. Throw from Ondene. Limestone floor tiles from Onsite. **Opposite page, clockwise from top left** The yoga studio and spa is in a separate building at the back of the property and it doubles as an entertaining space. Ceramic pieces include *Meandering Thoughts* objet by Manuela Serje from Curatorial+Co with wall vase from Planet. Autoban ‘Deco’ sofa from Criteria and custom ottoman by Hugh-Jones Mackintosh. ‘Cirq’ black cane armchair from Cosh Living. Baxter terracotta side table from Space. Jaime Hayon ‘Silhouette’ rug from Cult.



This page The entry foyer strikes an eclectic note with its recycled timber pillars, Matter Made 'Slon' table from Criteria and rattan wingback chair by Fratelli Boffi. Rug from Halcyon Lake. Artwork by Dan Kyle from Martin Browne Contemporary. Limestone floor tiles from Onsite. Ceramic bowl by Katarina Wells from Curatorial+Co. Basket from Jordan. **Opposite page, clockwise from top left** The bathroom has a 'Seed' basin and Brodware 'City Stik' tapware, all from Candana. Entry to the house, which is directly across from the beach, is via a sandstone-lined walkway with a custom concrete bench incorporated into the newly paved path. Custom timber front door by Hugh-Jones Mackintosh. The main bedroom is furnished with a Bonacina 'Eva' rattan chair from De De Ce. Artwork by Nicola Moss from Arthouse Gallery.



« says Justine, “so primarily it has been designed as a new entertaining space but the open decks lend themselves to yoga too.” The designers worked with landscapers Fifth Season to create the extensive area of new terraces cleverly incorporating the towering Norfolk Island pines and accessed via winding steps from the house. “The studio opens totally to the view and the furniture was chosen to be suitable for outdoor and indoor use,” says Justine.

Art is always an important element in a HJM-designed home and here existing pieces were complemented by eye-catching, punchy works by artists such as Nicola Moss, Jo Bertini, Zhu Peihong and Nancy Noonju. As well there is a deft peppering of colourful ceramics and basketware that provides an additional dynamic flourish in the personality-filled spaces.

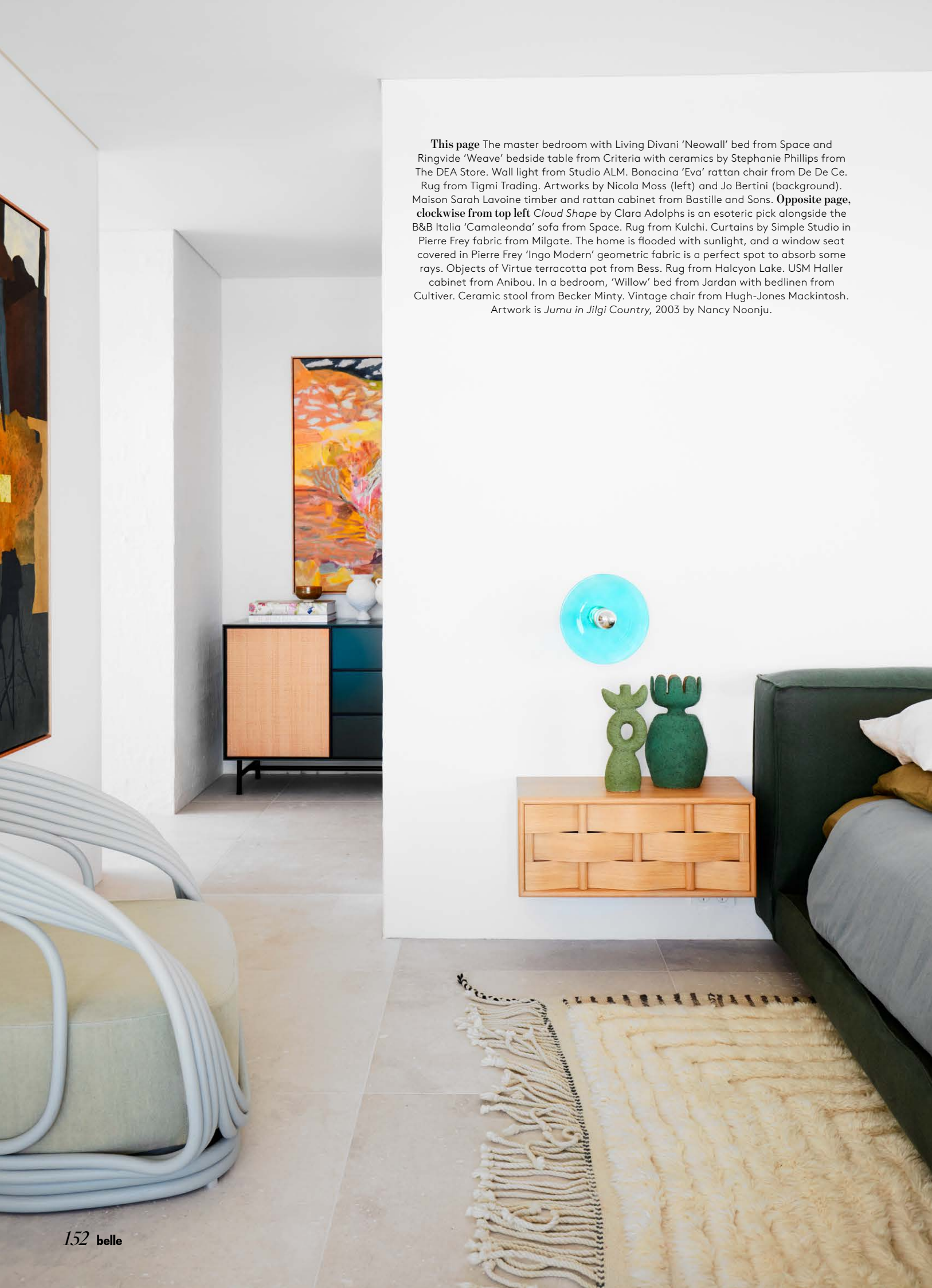
“We like the fact that we were a lot more adventurous here compared to our main residence and what a contrast the two interiors are,” says the owner. “On the one hand the house feels very calming with so many spots to sit and read a book or just listen to the waves and take in the views. On the other hand it is such a fun place for welcoming guests and entertaining.”

Fun, youthful and relaxed, the home sparks joy for its inhabitants and visitors, but above all it is a practical family home where function is paramount. **15**

hughjonesmackintosh.com; 5thseason.com.au



This page The master bedroom with Living Divani 'Neowall' bed from Space and Ringvide 'Weave' bedside table from Criteria with ceramics by Stephanie Phillips from The DEA Store. Wall light from Studio ALM. Bonacina 'Eva' rattan chair from De De Ce. Rug from Tigmi Trading. Artworks by Nicola Moss (left) and Jo Bertini (background). **Opposite page, clockwise from top left** Cloud Shape by Clara Adolphs is an esoteric pick alongside the B&B Italia 'Camaleonda' sofa from Space. Rug from Kulchi. Curtains by Simple Studio in Pierre Frey fabric from Milgate. The home is flooded with sunlight, and a window seat covered in Pierre Frey 'Ingo Modern' geometric fabric is a perfect spot to absorb some rays. Objects of Virtue terracotta pot from Bess. Rug from Halcyon Lake. USM Haller cabinet from Anibou. In a bedroom, 'Willow' bed from Jordan with bedlinen from Cultiver. Ceramic stool from Becker Minty. Vintage chair from Hugh-Jones Mackintosh. Artwork is *Jumu in Jilgi Country*, 2003 by Nancy Noonju.



SPEED READ

» Repeat clients of design studio Hugh-Jones Mackintosh requested a warm and inviting makeover of their Palm Beach holiday house. » A contemporary structure in concrete and glass, the house enjoys close ocean views and abundant natural light but it needed an injection of personality. » Eschewing typical beach-house hues, principals Justine Hugh-Jones and Katrina Mackintosh selected a palette of sophisticated terracotta and khaki with notes of blue and green to echo the coastal surroundings. » A whimsical rollcall of vintage pieces, Moroccan rugs and natural materials including cane, rattan, limestone and rope provide texture and layers of interest.

