

SPECIAL ISSUE

KITCHENS
bathrooms &

belle

A VERDANT BEACHSIDE GARDEN

WELCOME



BACK



A reflection of you
**FOCUS ON
MIRRORS**

**AUDACIOUS
INTERIORS
FROM
THOMAS
HAMEL TO
TAMSIN
JOHNSON**

COLOUR!



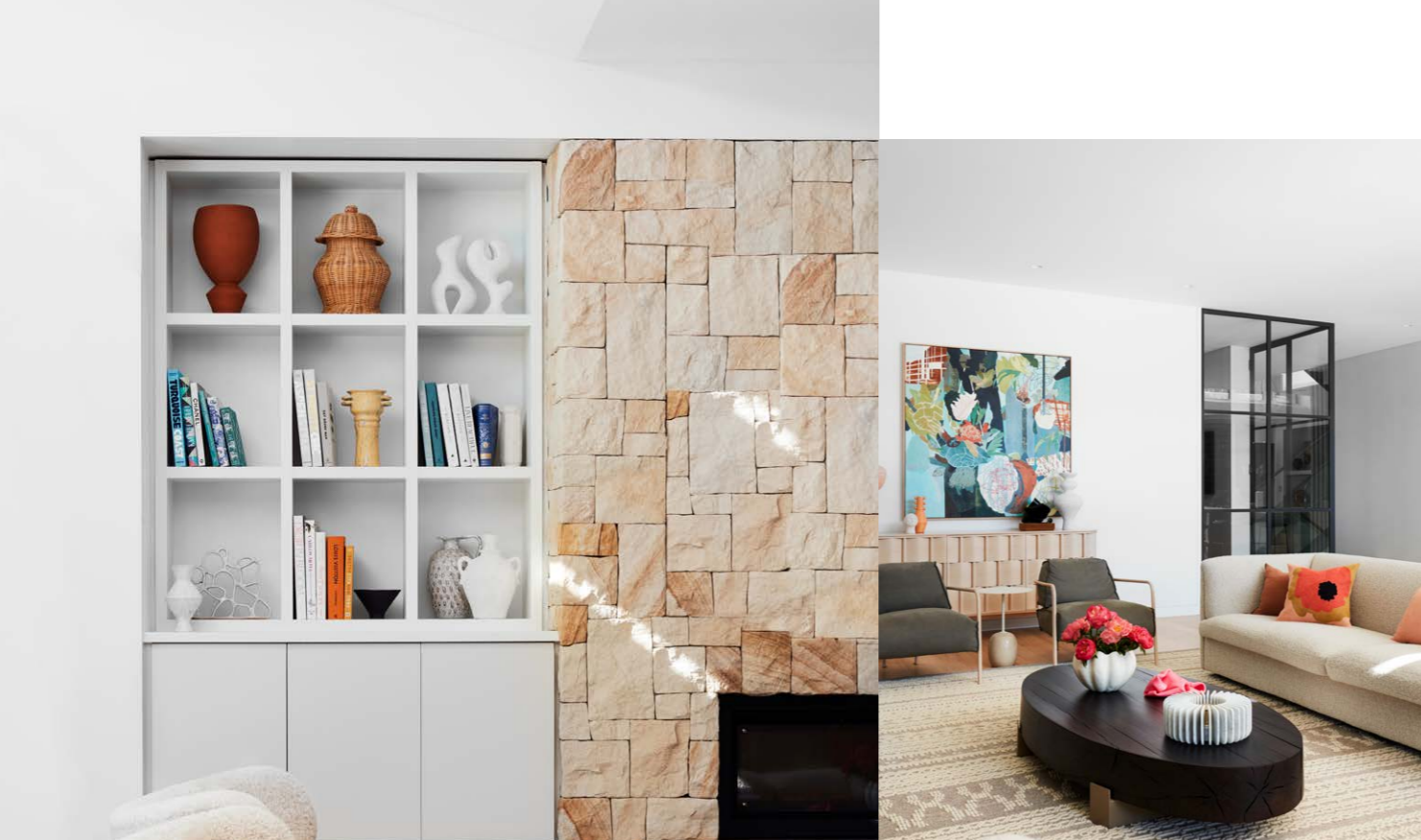
This page The outdoor terrace received as much design attention as the interior spaces. Paola Lenti 'Afra' armchairs and 'Zoe' outdoor rug, both from De De Ce. B&B Italia 'Ayana' coffee table from Space. Built-in seating with custom upholstery by Hugh-Jones Mackintosh. Inside, India Mahdavi 'Bishop' stool from Studio ALM. Opposite page Artwork, *Without trees and plants around my home I believe my soul would shrivel*, by Nicola Moss from Arthouse Gallery. Ringvide 'Weave' credenza from Criteria. India Mahdavi 'Don Giovanni' lamp and vase, both from Studio ALM. Sculpture by Kristiina Engelin from Curatorial+Co.

LIGHT SWITCH



Words **JUDY PASCOE** Photography **PRUE RUSCOE**
Styling **OLGA LEWIS**

Dialling up the interior colour palette from dark to light introduced a lively, contemporary ambience to this family home in Sydney.



Faced with an overwhelming amount of dark timber joinery and chocolate-hued floors, the new owners of this house on Sydney's lower North Shore called on interior design studio Hugh-Jones Mackintosh to lighten and brighten the interior for their young family.

The four-bedroom, three-bathroom home plus study had only been built a few years earlier, but the heaviness of its interior fit-out did not match the sunny position or the tranquil views of Sydney Harbour from the upstairs rooms.

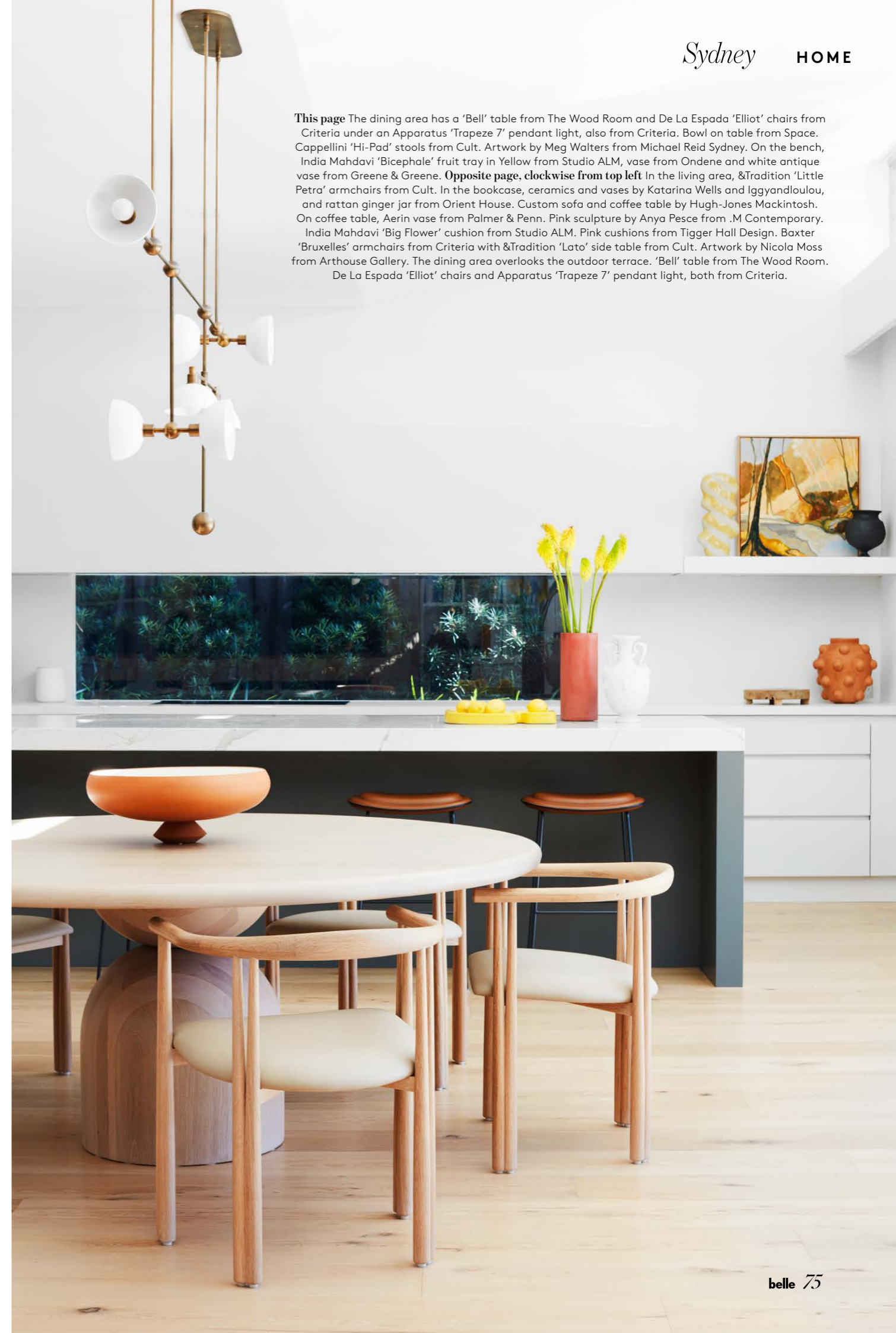
Before they purchased the house, the family had moved around interstate for several years and, having grown tired of renting and living in different locations, were keen to put down roots. While they loved the location of the property and the size of the flat block, the house was not exactly their dream home.

"The owners approached us to work some interior design magic," says founding principal Justine Hugh-Jones. Adds principal Katrina Mackintosh: "The house was unimaginative and bland, and the layout was predictable." It wasn't hard for the duo to see how they could elevate the mood and "weave a new look into an existing house".

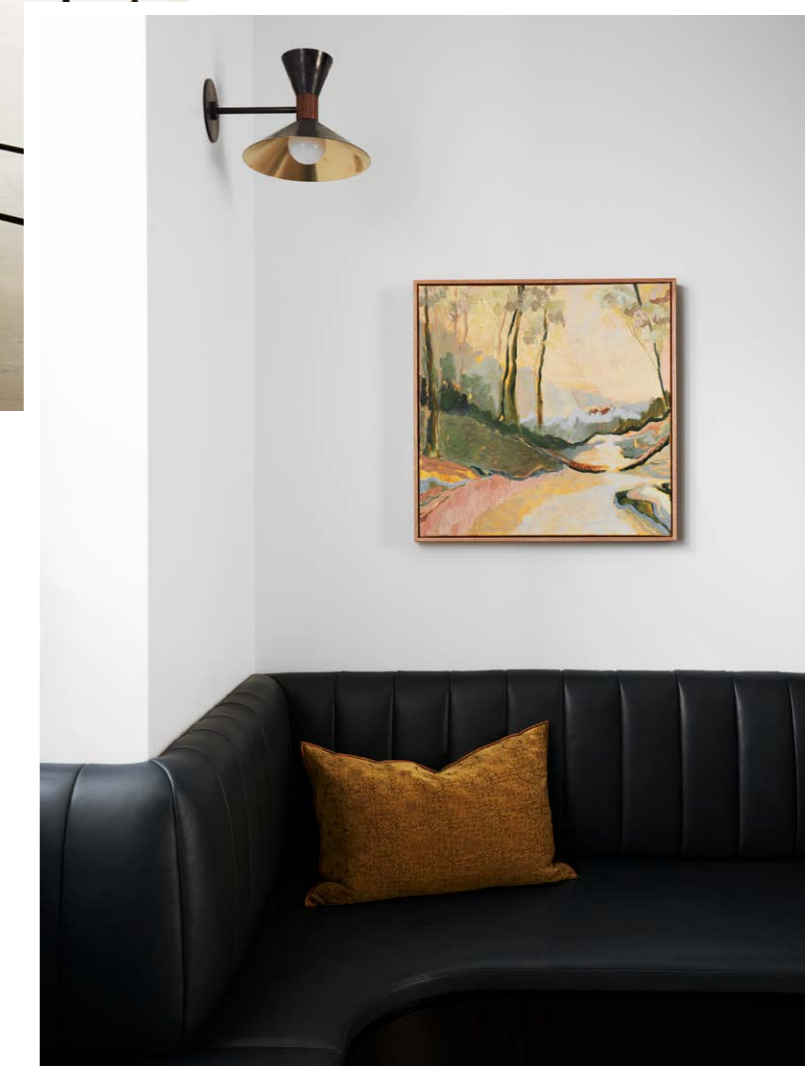
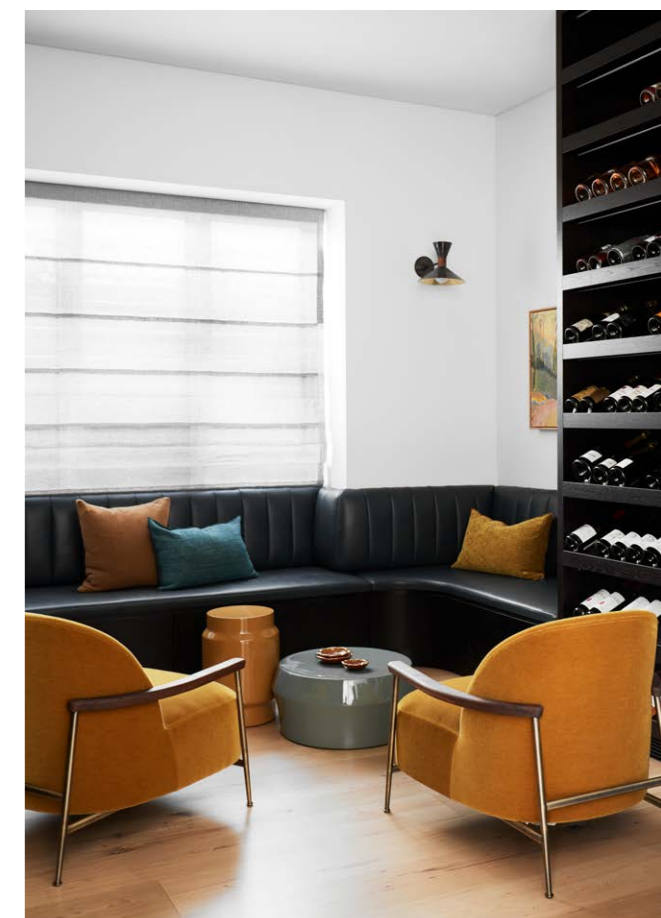
The downstairs living areas immediately benefited from a wash of Dulux 'Snowy Mountains Half' and the floors were sanded to a natural oak shade, which provided a luminous and neutral backdrop. The joinery was painted and remodelled to blend into the interior. However, Justine says they didn't want to "just do a white house. In lightening it up, you have to be clever with warmth," she says.

All new furniture was selected for the home and the designers had carte blanche from their "very trusting clients". The chosen colour palette features coastal shades without being beachy, says Katrina, and pops of mustard, blush and terracotta throughout lend depth. Texture and an eclectic combination of shapely furniture add interest and sophistication.

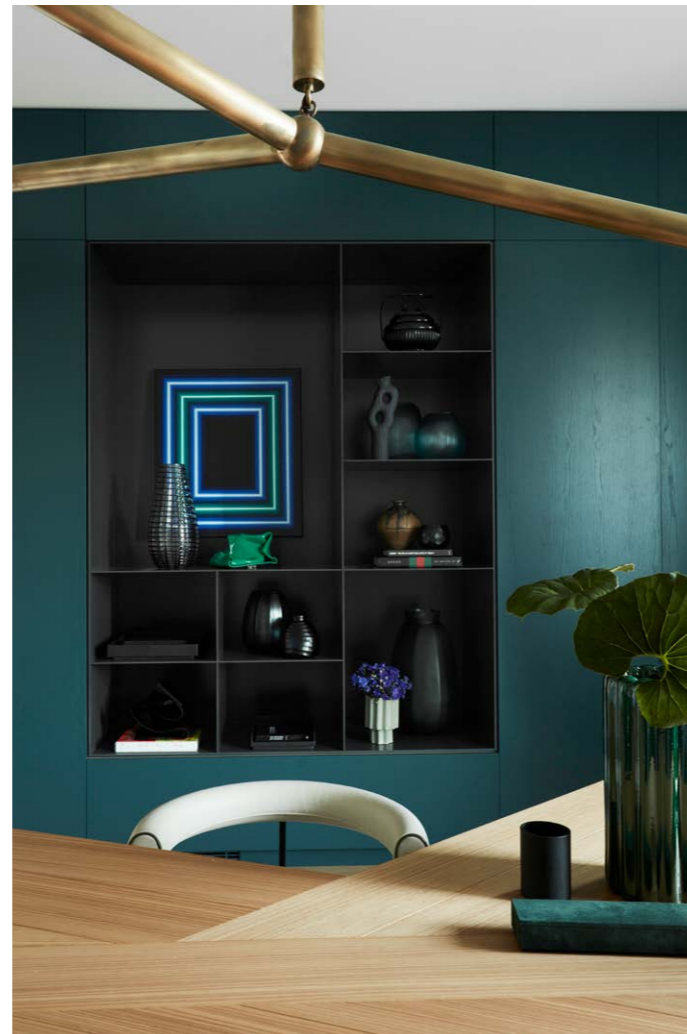
"We made considered choices with the furniture," says Katrina. "The 'Bell' round dining table by The Wood Room, for instance, was a better choice than a rectangular one, as it opens up the space and lets people move freely around it." »



This page The dining area has a 'Bell' table from The Wood Room and De La Espada 'Elliot' chairs from Criteria under an Apparatus 'Trapeze 7' pendant light, also from Criteria. Bowl on table from Space. Cappellini 'Hi-Pad' stools from Cult. Artwork by Meg Walters from Michael Reid Sydney. On the bench, India Mahdavi 'Bicephale' fruit tray in Yellow from Studio ALM, vase from Ondene and white antique vase from Greene & Greene. **Opposite page, clockwise from top left** In the living area, &Tradition 'Little Petra' armchairs from Cult. In the bookcase, ceramics and vases by Katarina Wells and Iggyandloulou, and rattan ginger jar from Orient House. Custom sofa and coffee table by Hugh-Jones Mackintosh. On coffee table, Aerin vase from Palmer & Penn. Pink sculpture by Anya Pesce from .M Contemporary. India Mahdavi 'Big Flower' cushion from Studio ALM. Pink cushions from Tigger Hall Design. Baxter 'Bruxelles' armchairs from Criteria with &Tradition 'Lato' side table from Cult. Artwork by Nicola Moss from Arthouse Gallery. The dining area overlooks the outdoor terrace. 'Bell' table from The Wood Room. De La Espada 'Elliot' chairs and Apparatus 'Trapeze 7' pendant light, both from Criteria.



This page, clockwise from top left The new wine room is a favourite of the owners and the designers. Custom bar table by Hugh-Jones Mackintosh with 'Iva' stools from Grazia&Co. Michael Verheyden 'Kando' vase from Ondene. Artwork, *Pride of Madeira (Echium candican)* in Spring 2017, by Tamara Dean from Michael Reid Sydney. Custom curved leather banquette seat by Hugh-Jones Mackintosh. Cushions from Tigger Hall Design. Gubi 'Sejour' armchairs from Criteria. Blind by Simple Studio. An artwork by Meg Walters from Michael Reid Sydney is displayed above the custom leather banquette seat. **Opposite page** B&B Italia 'Eracle' console from Space. Murano vase from Conley & Co. Brown ceramic bowl from Rudi Rocket. Moser vase from Conley & Co. 'Surface' sconce from Studio Henry Wilson. Artwork by Ken Knight from Wentworth Galleries. The steel-framed glass doors enclose the new wine room.



« While the furniture needed to be family friendly, the owners embraced high-end investment pieces by designers such as India Mahdavi and Paola Lenti, and the selections are eclectic and punchy. From the living room's custom-designed sofa in Maharam 'Pebble Wool', the &Tradition 'Little Petra' armchairs with tactile sheepskin upholstery, the Baxter 'Bruxelles' leather armchairs and the sculptural 'Bishop' stool by India Mahdavi to the master bedroom's custom undulating bedhead, De La Espada gloss lacquer tallboy and velvet 'Petit Swoon' chair, there is a sense of youthful vitality at every turn.

One of the home's main attractions is the new wine room crafted out of an existing kids' playroom. Adding steel-framed glass doors to link it to the living room, while maintaining separation, ensured it delivered "interest and an idea of temptation", says Justine. A large room with comfortable built-in leather banquette seating, wine storage and a bar area, it is a favourite of both the designers and the owners, who say, "It has turned an area of the house with low natural light into the perfect room."

Outside, the level block ticks all the boxes for the young family and the house nestles into its established landscaping, with the designers facilitating an easy connection between indoors and out. "It needed to look dynamic, rather than just coming off the living room," says Justine, so the terrace is furnished with a Paola Lenti setting in muted blues and greens that echoes the colours in the surrounding garden and pool as well as the palette inside. "The clients loved the sculptural shape of those chairs and realised that an outside room is just as important to get right as an inside one."

In the upstairs bedrooms, light and sun dance around the walls painted in gelato hues. The master bedroom's scalloped bedhead in teal strikes a soft, romantic note while accents of mustard add energy and tonal balance.

The designers were also charged with helping the clients in their art selection, and a judicious mix of graphic artworks by such respected names as Nicola Moss and Meg Walters complements the contemporary and polished ambience of the home. ■

hughjonesmackintosh.com

This page In the study, a vintage Jakob Rudowski easy chair. 'Chub' Carrara and oak coffee table from Sarah Ellison. Custom upholstery and cushions by Hugh-Jones Mackintosh. Custom rug by The Green Room. Vintage dish from Rudi Rocket. Cactus vases from Hay. Artwork by Kate Ballis from Arthouse Gallery. **Opposite page, from left** A large Apparatus 'Arrow' pendant light in aged brass from Criteria hangs above a Cassina 'Ventaglio' oak desk and 'LC7' swivel chair, both from Mobilia. B&B Italia 'Husk' two-seater sofa from Space beneath the window. Custom rug by The Green Room. In the shelves, *Future Ruminations* artwork by Andy Harwood from Studio Gallery. India Mahdavi 'Zoom' vase from Studio ALM and Guaxs vases from Conley & Co.



The bedhead strikes a soft,
romantic note while accents
of mustard add energy
and tonal balance.

These pages Blue hues create a serene mood in the master bedroom. Custom bed, bedhead and ottoman by Hugh-Jones Mackintosh. 'Petit Swoon' chair from Great Dane. On bedside table, Aerin sculpture from Palmer & Penn and vase by Katarina Wells from Curatorial+Co. India Mahdavi 'Bonbon' round cushion in Yellow from Studio ALM. Society Limonta throw from Ondene. Bed linen from Hale Mercantile Co. Curtains by Simple Studio. Artwork by Clara Adolphs from Chalk Horse.

SPEED READ

» Design studio Hugh-Jones Mackintosh was charged with lightening and brightening the dark, heavy interiors of a family home on Sydney's lower North Shore. » A wash of Dulux 'Snowy Mountains' on the walls and floorboards sanded back to a natural oak set the scene for the fresh new look. » Not wishing to do 'a white house', the design duo introduced warmth with a palette of coastal colours pepped up with accents of mustard, terracotta and blush. » Texture and shapely furniture deliver interest and sophistication, from the sheepskin-upholstered armchairs in the living room to the scalloped bedhead in the master suite. » The standout feature is the new wine room, which the designers crafted out of the former kids' playroom. It now functions as a sophisticated adults' retreat.